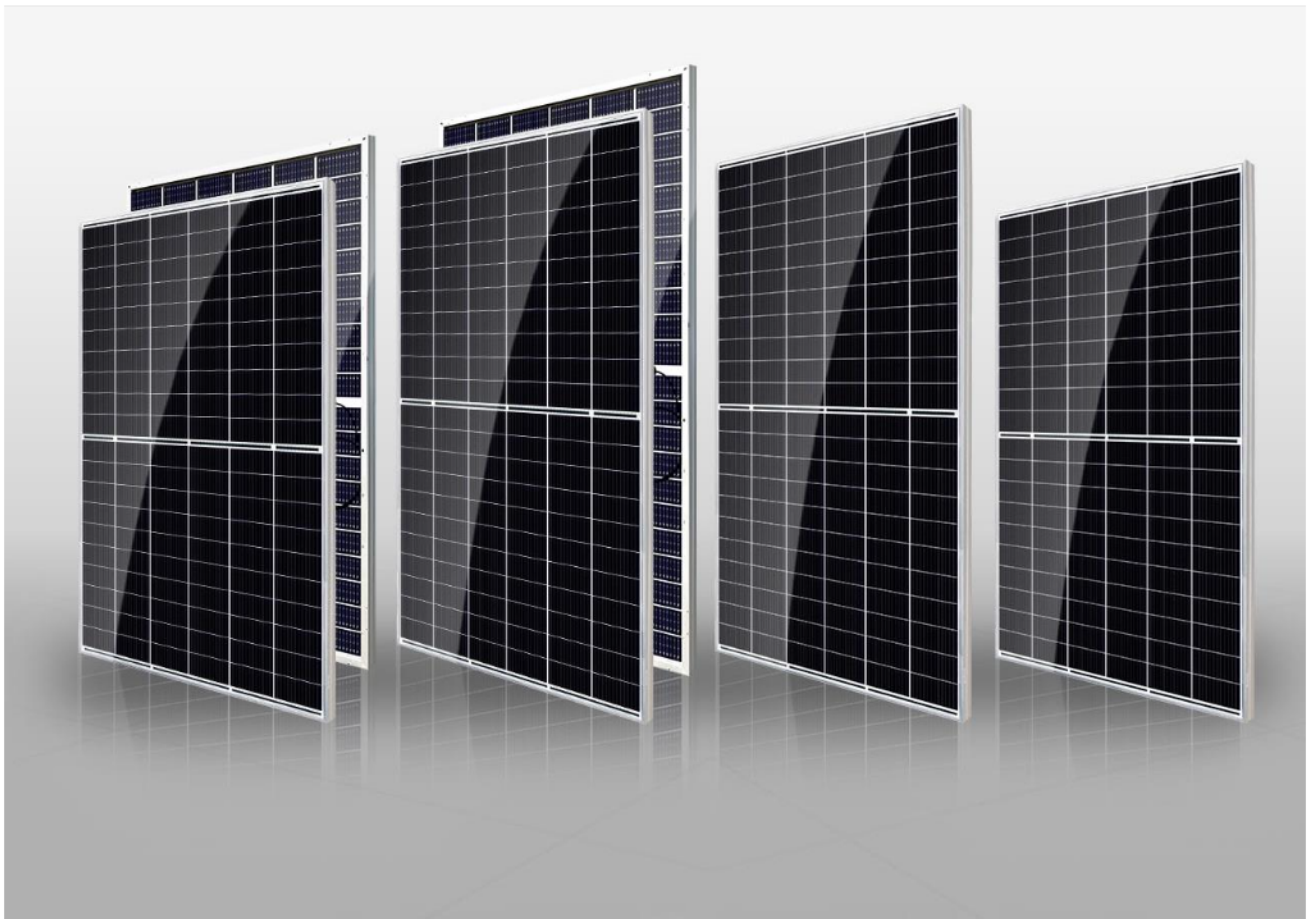


LEADING THE NEW ERA OF 600W+ MODULES

CANADIAN SOLAR
HiKu7 & BiHiKu7
UNPACKING INSTRUCTIONS

HiKu7 & BiHiKu7 – UP TO 670 W



**Step
01**

Place pallets on flat ground

CS7N & CS7L modules are packed vertically using an innovative packaging system. Please place pallets on flat ground. The inclination of the ground should not exceed 4°.



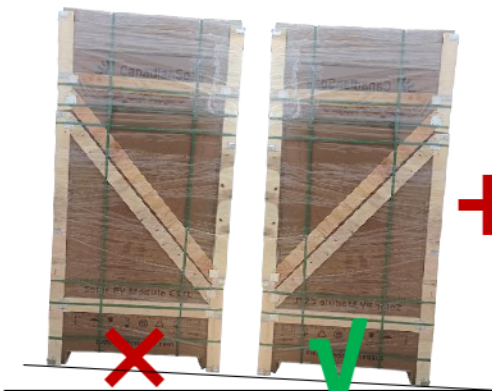
Flat ground **✓**



Inclination > 4° **✗**

Unpack with anti-tipping bracket when the inclination is $0^\circ < \text{Angle} \leq 4^\circ$

Please place the pallets in the right direction (shown as below) and use an overturning protection to ensure the safety of the modules. Please check the details in the next appendix step.



Place the pallet in right direction
(The lower wooden fence leans back is the right direction)



Support with wooden bracket

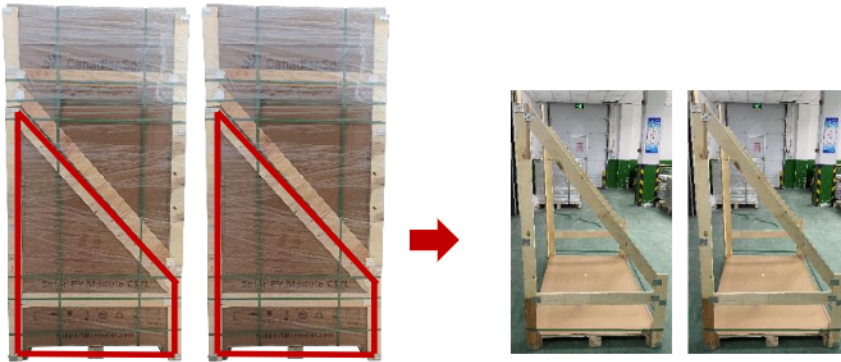


Anti-tipping group onsite picture

**Appendix
Step
01**

Simple anti-tipping beams making process

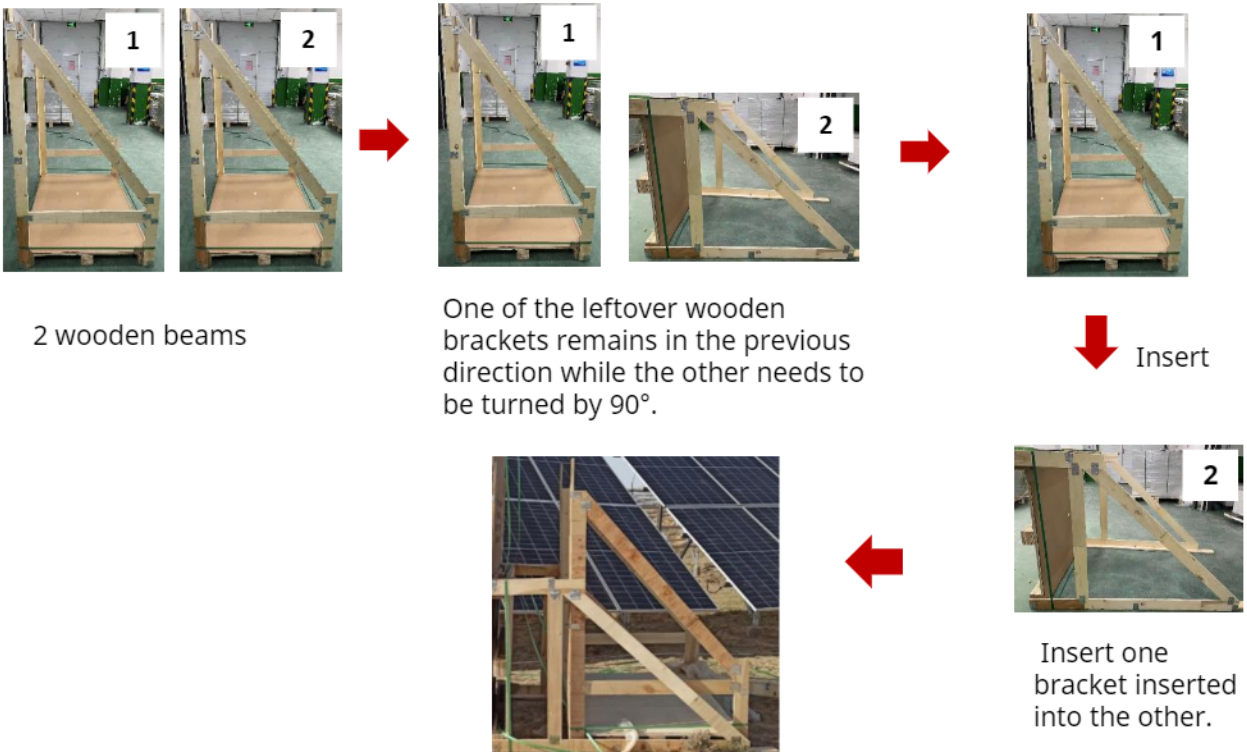
Two wooden beams are needed to assemble the overturning protection. After carefully unpacking the first two pallets on a flat ground, two wooden brackets/beams will remain.



2 pallets of modules

2 wooden beams

Assembly process:



2 wooden beams

One of the leftover wooden brackets remains in the previous direction while the other needs to be turned by 90°.

↓ Insert

Insert one bracket inserted into the other.

Simple anti-tipping bracket

Step 02

Tear off the box shrink-wrap film

Tear off all the shrink-wrap film covering the box



Attention:

- Please wear gloves to prevent hand injury.
- Please remove the shrink-wrap film with care and avoid pulling with excessive force.
- Unpacking operation shall not be carried out over wind force 6 (Strong Breeze, 10.8-13.8 m/s).

Step 03

Remove outer packaging straps

Cut off the packing straps on the outside of the packing box, leaving the two bottom straps unchanged.



Do not remove!

Attention:

- Please wear gloves to prevent hand injury.
- Please do make sure the bottom two straps remain uncut.
- Please pay attention when cutting off the straps to avoid it from springing back to avoid personal injury.

Step 04

Remove the upper wooden beams and box top cover

The wooden edge protection is divided into two parts: upper and lower. Please remove the upper wood edge protection, keep the lower wood edge protection, and then remove the top box cover.



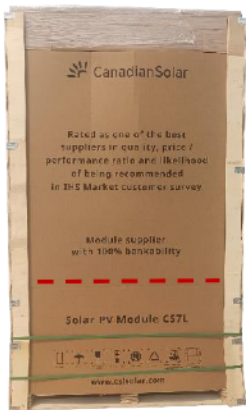
Attention:

- Please wear gloves to prevent hand injury.
- Please note the wood edge protection is heavy. Refrain from letting it fall to the ground directly to avoid personal injury.
- It is recommended to remove the top cover with the help of one of the wooden brackets.

Step 05

Remove the upper carton

CS7N & CS7L products packaging uses a one-piece enclosure with a broken line design. Please tear off the box along the broken line and take off the upper part of the carton.



front view



side view

Broken line on package



The starting point



Tear the package along the broken line

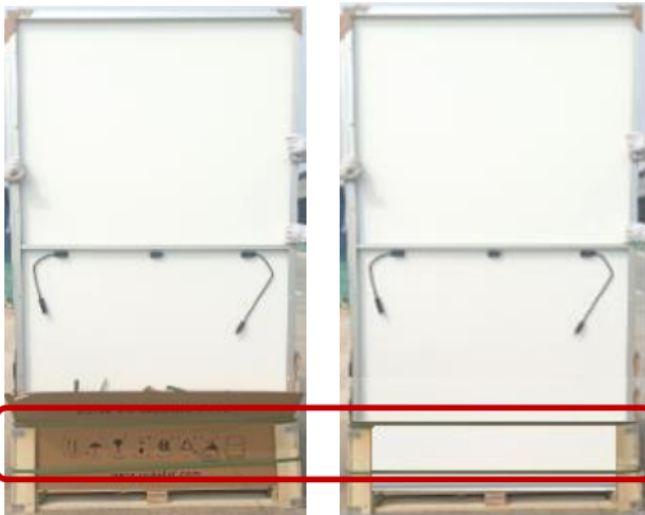


Appearance after removing the upper carton

**Step
06**

Remove the inner packing straps

Cut off all straps inside the package, including the bottom belt hidden by the box. Do NOT remove the 2 straps on the outside of the packaging.



Do not remove!

Attention:

- Please wear gloves to prevent hand injury.
- Please pay attention to not remove the two lower packing straps of the outer packing.
- The lower cardboard can be removed. Behind it packing straps appear at the bottom. Please remove them first to unpack the module.

**Step
07**

Tear off the anti-tipping tape: one by one

CS7N & CS7L module packaging comes along with an ultra-high viscosity tape on both sides to prevent the modules from falling while being unpacked. Please remove the adhesive tape one by one so that only one module can be removed at a time before removing the tape from the next module.

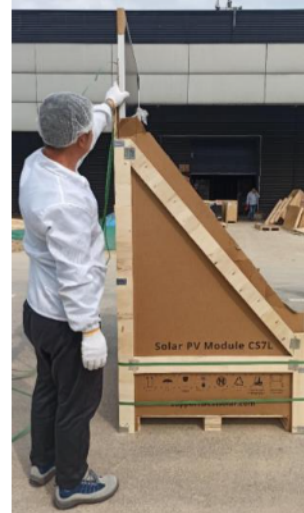


Attention:

- Please wear gloves to prevent hand injury.
- Please tear the tape to take only one module out at a time. Do not tear the tape on the next piece of module

**Step
08****Take out the modules: one by one**

Two workers are required to take modules out of the box. When handling modules always use both hands.

**Attention :**

- Please wear gloves to prevent hand injury.
- It is recommended that two workers take out the modules from both sides of the packaging at the same time.
- The module packaging is tight, please move the first piece from left and right parallel to the short side of the module, pulling up while you move, carefully take out the first piece of module.
- Need people to support the unpacking modules during the whole process.
- Please unpack the modules right after installing them. and install the modules in one time once opening the package. Do not leave a few pieces in the packing box for a long time.
- Sort out the empty packaging, separating the different materials for proper recycling.

- Please take photos and contact the local sales/customer service staff at first time if you encounter with damaged package or modules, and feedback to the service mailbox, support@csisolar.com , thanks!
- If the customer does not unpack the module according to the steps specified in this manual, we shall not assume any responsibility for the personal and property damage.



Damaged package



Damaged module

LEARN MORE



Scan to see how HiKu7 and BiHiKu7 modules are made and tested on YouTube



Facebook



Instagram



LinkedIn



Twitter

Leading The New Era of 600W+ Modules
Canadian Solar HiKu7 & BiHiKu7 Unpacking Instruction

CSI Solar Co., Ltd.

www.csisolar.com marketing@csisolar.com